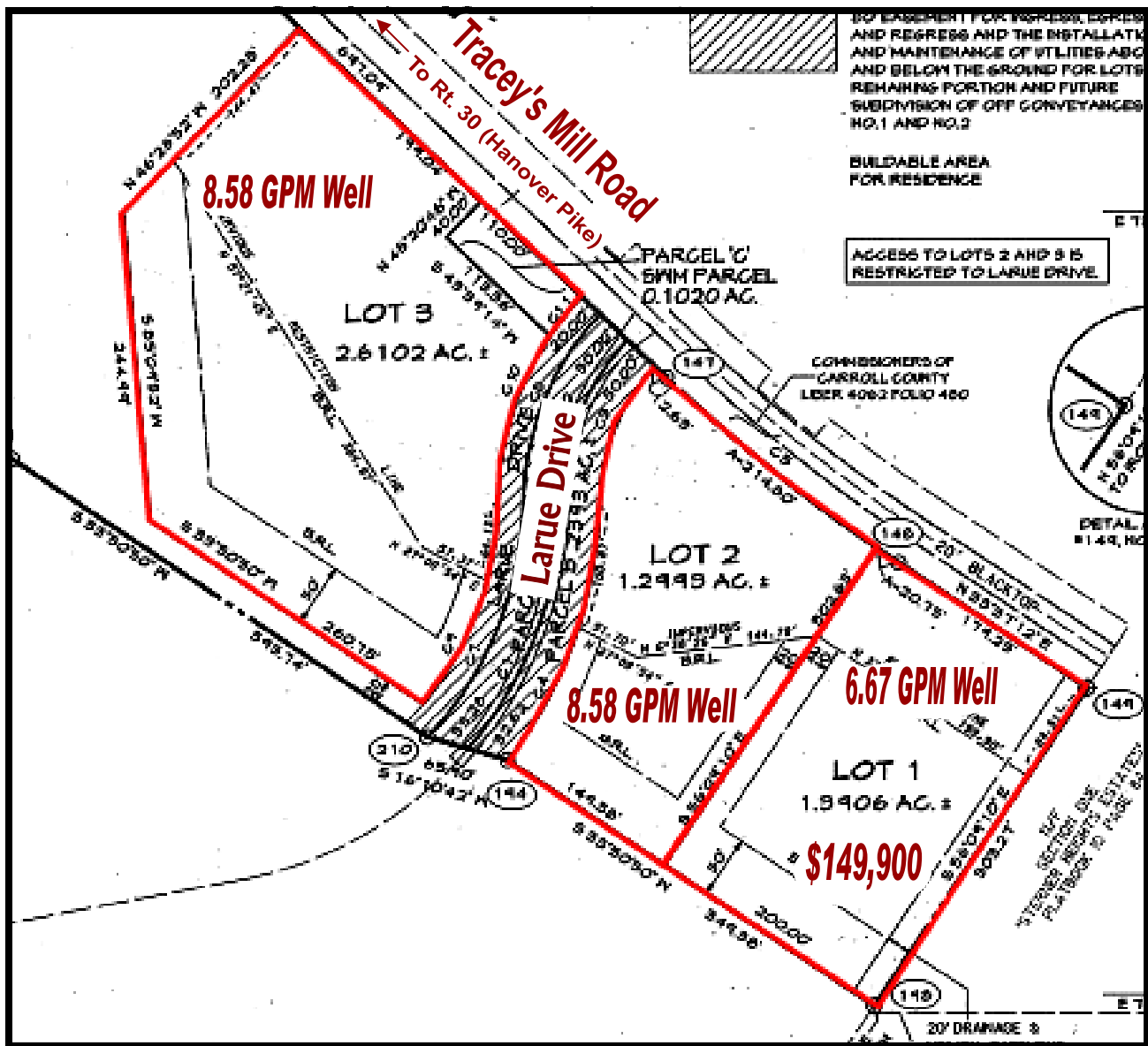


**Build
Your Dream
Home!**

Bachman Overlook Manchester, MD 21102

- ◆ All 3 lots have wells and are perced for 4 bedroom houses
- ◆ Lots are ready to build on with electric, telephone & cable TV roughed in
 - ◆ Access to Lot 1 is off of Tracey's Mill Road
- ◆ Access to Lots 2 & 3 is off of Larue Drive (a use in-common drive)



**For more information, please call
Dan Hoff of the Samuel C. Hoff Agency at 410-259-0779**

Bachman Overlook

Tracey's Mill Road, Manchester, MD 21102



SAMUEL C. HOFF AGENCY



Real Estate and Insurance

166 E. Main Street
Westminster, Maryland 21157
410-848-1115 • 410-876-1260

